

Starlight Thermostat Instruction

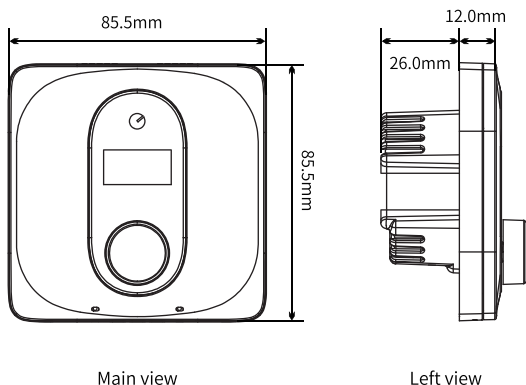
Product Description

Starlight series Smart Thermostat is a thermostat used in floor heating system or gas boiler for indoor temperature control. Using knob for interactive operation, with safe child lock function, it is smarter and easier.

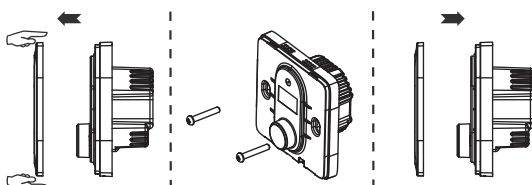
Specification

Product model: ST1820 PbS
Power input voltage: 90-240VAC 50Hz
Wireless protocol: WiFi 802.11 b
Working humidity: 5-95%
Temperature measurement accuracy: $\pm 0.5^{\circ}\text{C}$
Humidity measurement accuracy: $\pm 5\%$
Working environment: $-10\text{--}55^{\circ}\text{C}$
Load current: 2A resistive load, 1A inductive load

Size

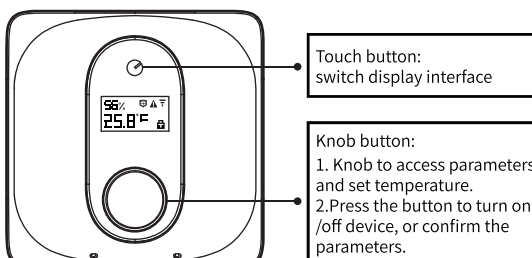


Installation Diagram



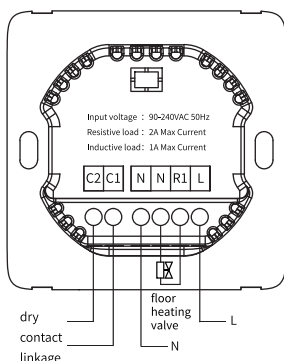
1. Separate the front and rear
2. Install the rear
3. Insert the front

Panel Interface Introduction



Network is normal	Can't access to internet	Lock panel operation	Failure occur

Wiring Diagram

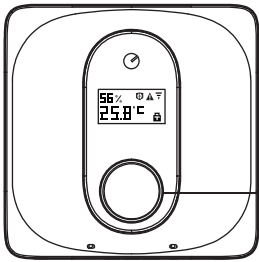


- "R1" : Connected to the floor heating valve
- "L" : Connected to live line of power supply
- "N" : Connected to the floor heating valve
- "N" : Connected to neutral line
- "C1"/"C2" is a dry contact as a control signal for turning gas boiler or other heat source equipments on/off

Panel operation

- On-off operation
Press the "knob" button to switch turn on or turn off the thermostat.
- Temperature setting
Adjust the "knob" clockwise or counterclockwise to raise or lower the setting temperature.
Default setting range: 15°C to 35°C
- Child lock
Press and hold the "🔒" button for 5 seconds, the child lock "🔒" icon will appear or disappear on the screen, which means it is locked or unlocked.

Panel network configuration operations



Restore network:
Hold down the "knob"
button for 10 seconds

The screen displays "Paring, Open APP "

Troubleshooting method

Fault description	Troubleshooting method
Built-in sensor failure	Check the built-in temperature sensor

Alert description	Alert reason
Antifreeze alarm	Indoor temperature is too low, enter the antifreeze mode.

Advanced Settings

Press the button, switch to [Setting], press the "knob" to enter the password. Rotate knob to enter the password, and short press the knob to confirm the password. Password is 000.

Parameter Description	Range	Default value
Minimum set point	5~50°C	15
Maximum set point	5~50°C	35
Heating differential	1~10°C	1
Room temperature calibration	-5~5°C	0
Indoor humidity calibration	-20~20%	0
Antifreeze protection	0-disable/1-enable	0
Antifreeze starting room temp.	0~21°C	5
Power-down memory	0-disable/1-enable	1

APP Download Instruction

To install the Shelly Smart Control app, please scan the QR code using the camera of your smartphone and select your app store from the web page.

If you scan the QR code with WeChat, please click "Open browser" button in the upper right corner to download and install the app.



Alternatively:

- open https://shelly.cloud/app_download using your phone's web browser and choose the app store for your mobile device
- or search for " **Shelly Smart Control** " in Apple AppStore, Google Play or Huawei AppGallery.

After installation, please follow the instructions in the app to connect the device to your WiFi network.

Installation Tips

This thermostat should be installed by professionals.

Please read this manual carefully before installation, improper installation will cause damage to the thermostat.

Please check whether this thermostat is suitable for your equipment before installation.

Please keep this manual in a safe place for future reference.

Please follow the wiring diagram strictly, otherwise the equipment may be damaged.

When installing, do not punch any holes on the thermostat, and ensure that the installation surface is flat enough.

When installing, do not hit the display by hard objects or squeeze the display hard to avoid cracking.

The maximum torque of the screw: 0.4Nm.



Note: There is a danger of electric shock, please cut off the power before installation!

The thermostat is recommended to be installed at a height of about 1.2 meters from the ground. Please do not install it in the following locations:

- Unventilated places such as corners or behind doors
- Near heating or cooling pipes
- Near sunlight, heat sources, and extremely humid places