

Youth Edition Smart Thermostat User Manual

Scope of Use

ST800 series products are two-in-one products for cooling and heating. They are mainly used for indoor temperature control of central air-conditioning fan-coil systems or floor heating systems.

Specification

Product model: ST800 series

Input voltage: 240VAC 50/60Hz

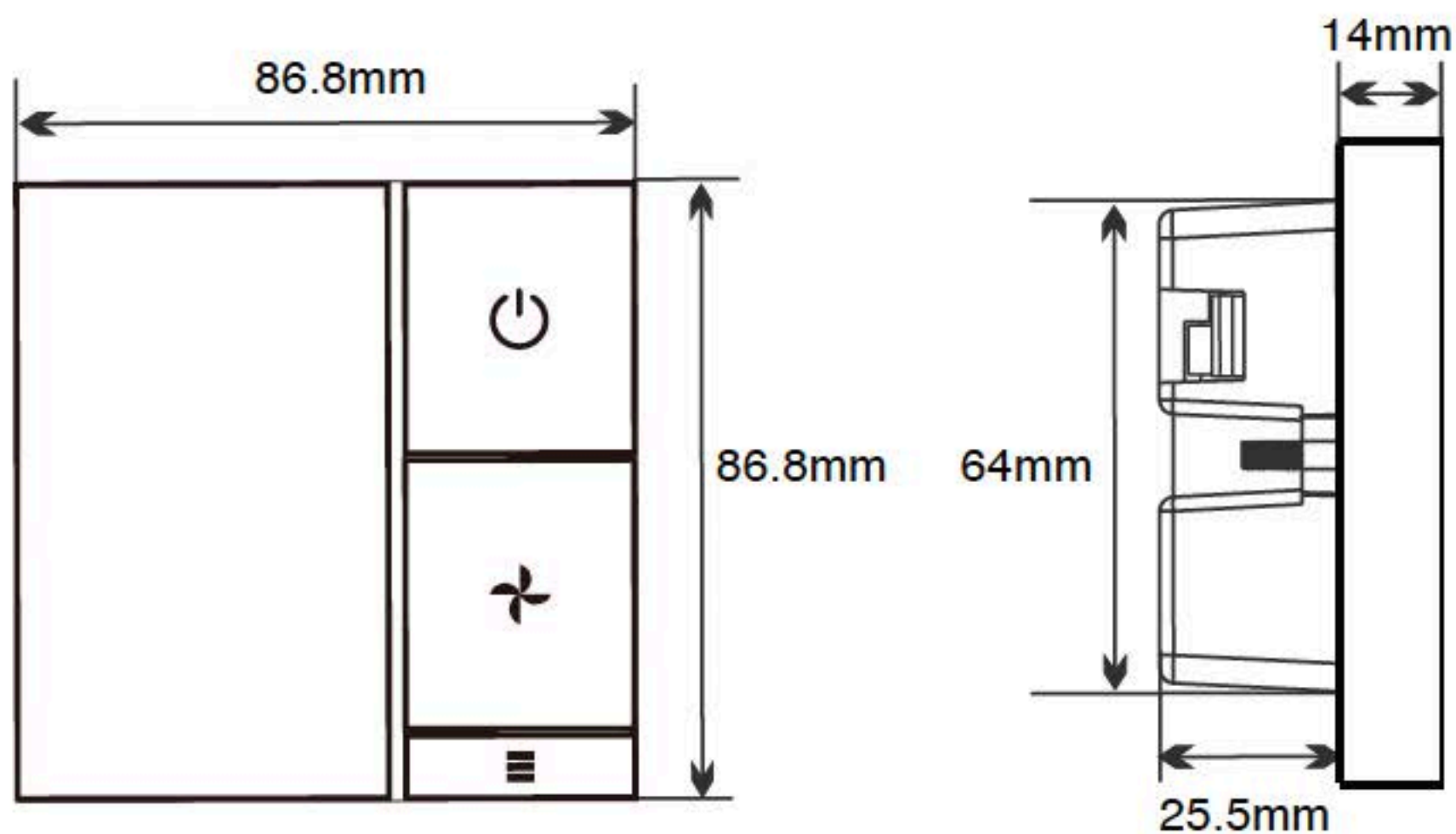
Load current: 2A resistive load, 1A inductive load

Temperature control range: 5-35°C

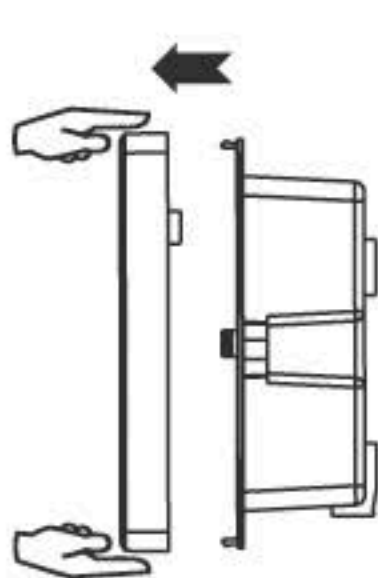
Working environment: -10-55°C

Protection level: IP20

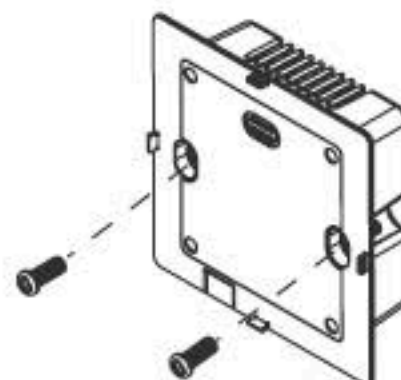
Dimension



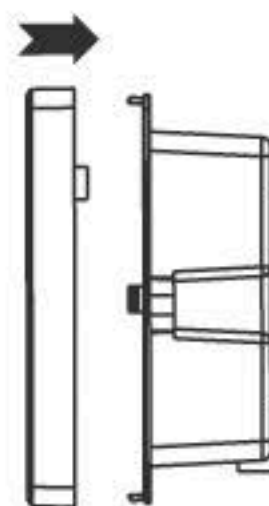
Installation Diagram



1. Separate the front and back

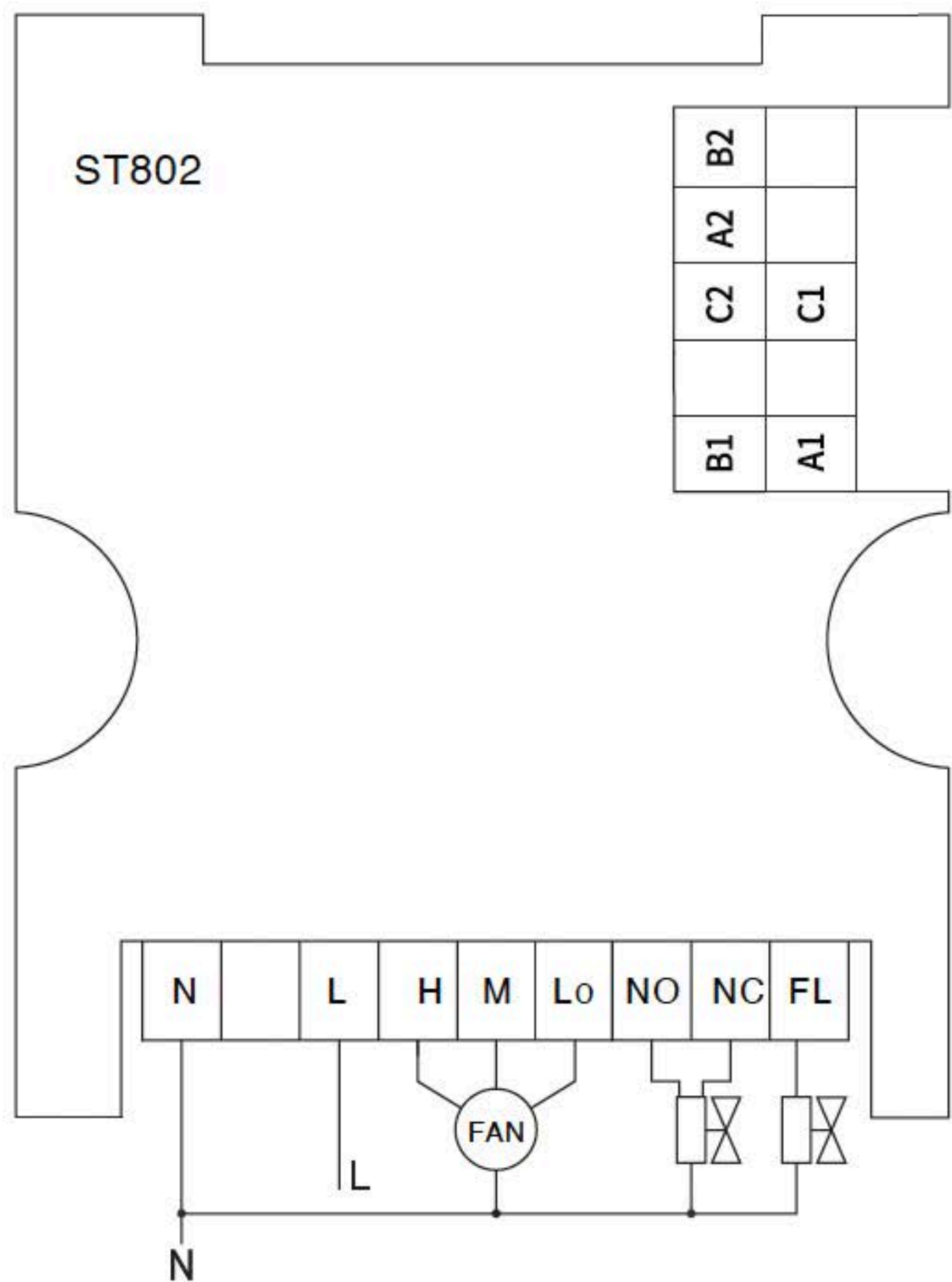


2. Install the rear



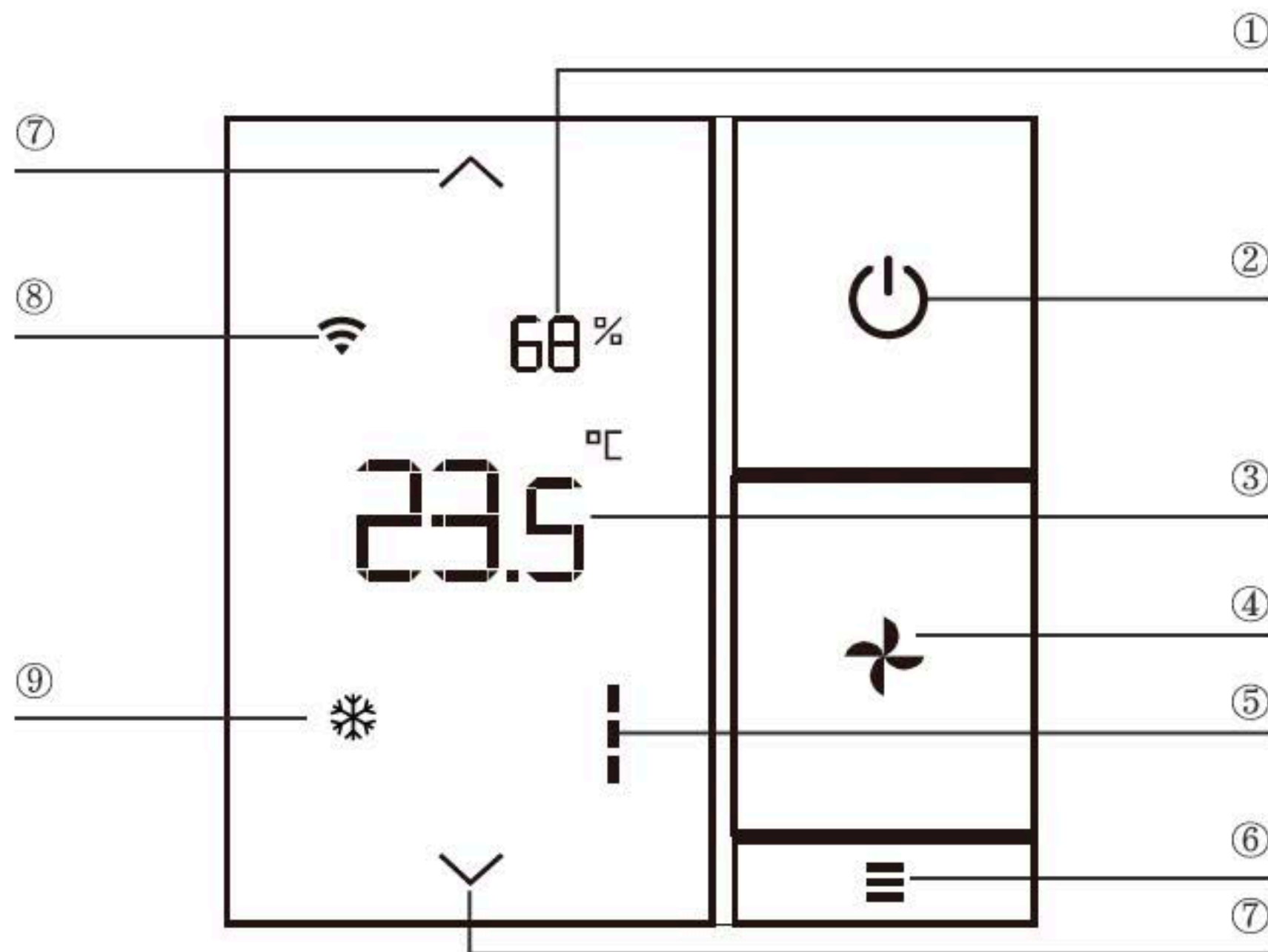
3. Insert the front

Instruction



A1/B1: RS485(reserve)	A2/B2: RS485(reserve)
C1/C2:Digital output	H: High speed
M: Medium speed	Lo: Low speed
Valve(NO/NC):Fan coil valve	FL:Floor heating valve

Display interface and button functions



1. Room relative humidity.
2. ON/OFF button, hold on the button until the wifi icon is displayed.
3. Room temperature.
4. Switch fan speed.
5. Current fan speed.
6. Mode selection button.
7. Up and Down button for adjust set point.
8. The Wifi signal will be displayed after connected to internet.
9. Show the current setting mode.

Advanced settings

Hold the "mode" key for 5sto enter the advanced setting.

Parameter number	Description	Default Value	Setting Range
B04	Summer temperature calibration	0	-5°C~5°C
B05	Winter temperature calibration	0	-5°C~5°C
P01	RS485-1 baud rate	2	1~3
P03	RS485-1 address	1	1~255

P01 description:1-2400/2-4800/3-9600

P00 RS485function: 0-slave/1-master (Default Value 0)

App download instruction

To install the Shelly Smart Control app, please scan the QR code using the camera of your smartphone and select your app store from the web page.

If you scan the QR code with WeChat, please click “Open browser” button in the upper right corner to download and install the app.

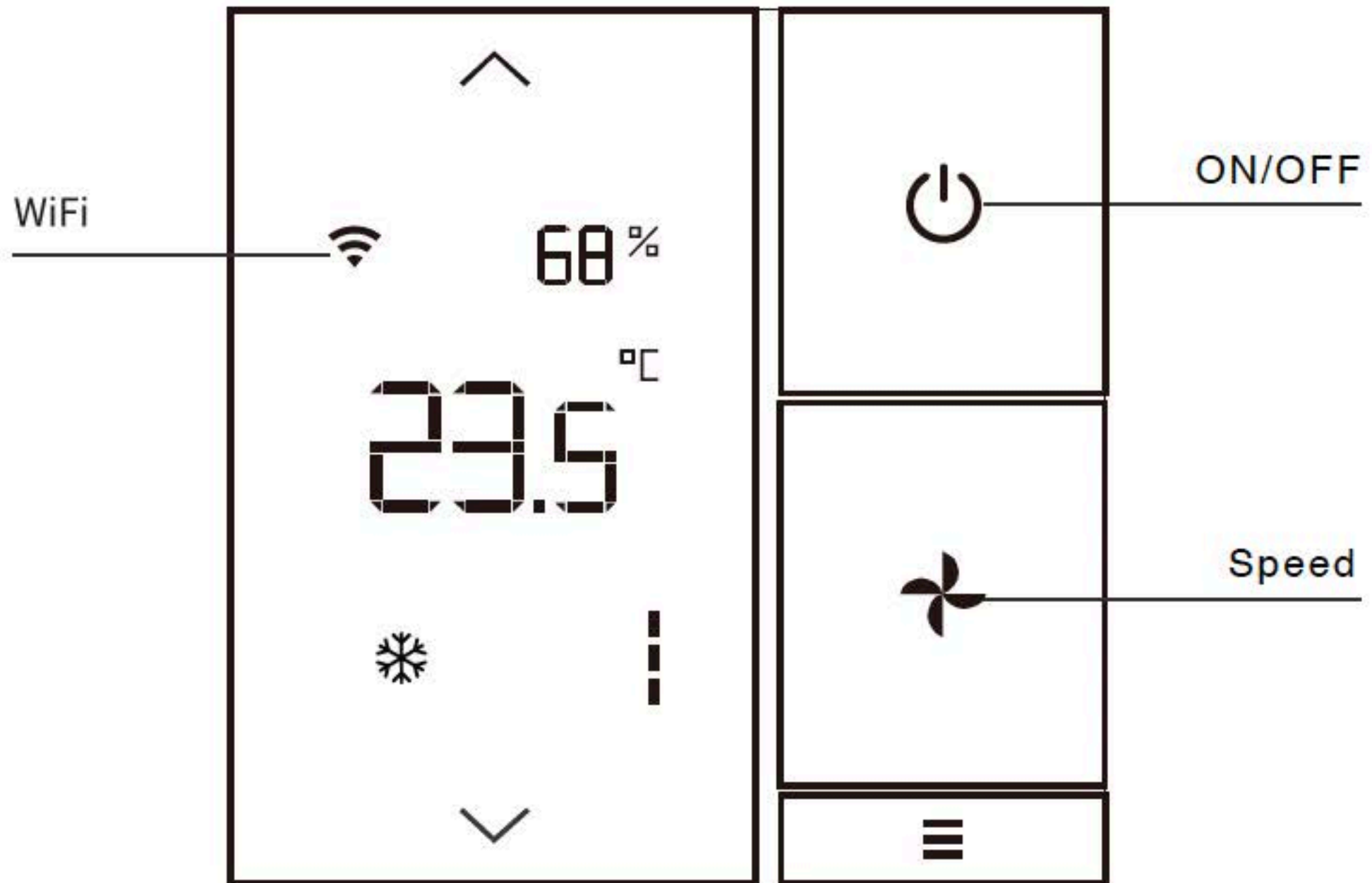


Scan to install Shelly Smart Control app

Alternatively:


- open https://shelly.cloud/app_download using your phone's web browser and choose the app store for your mobile device
- search for “**Shelly Smart Control**” in Apple AppStore, Google Play or Huawei AppGallery.

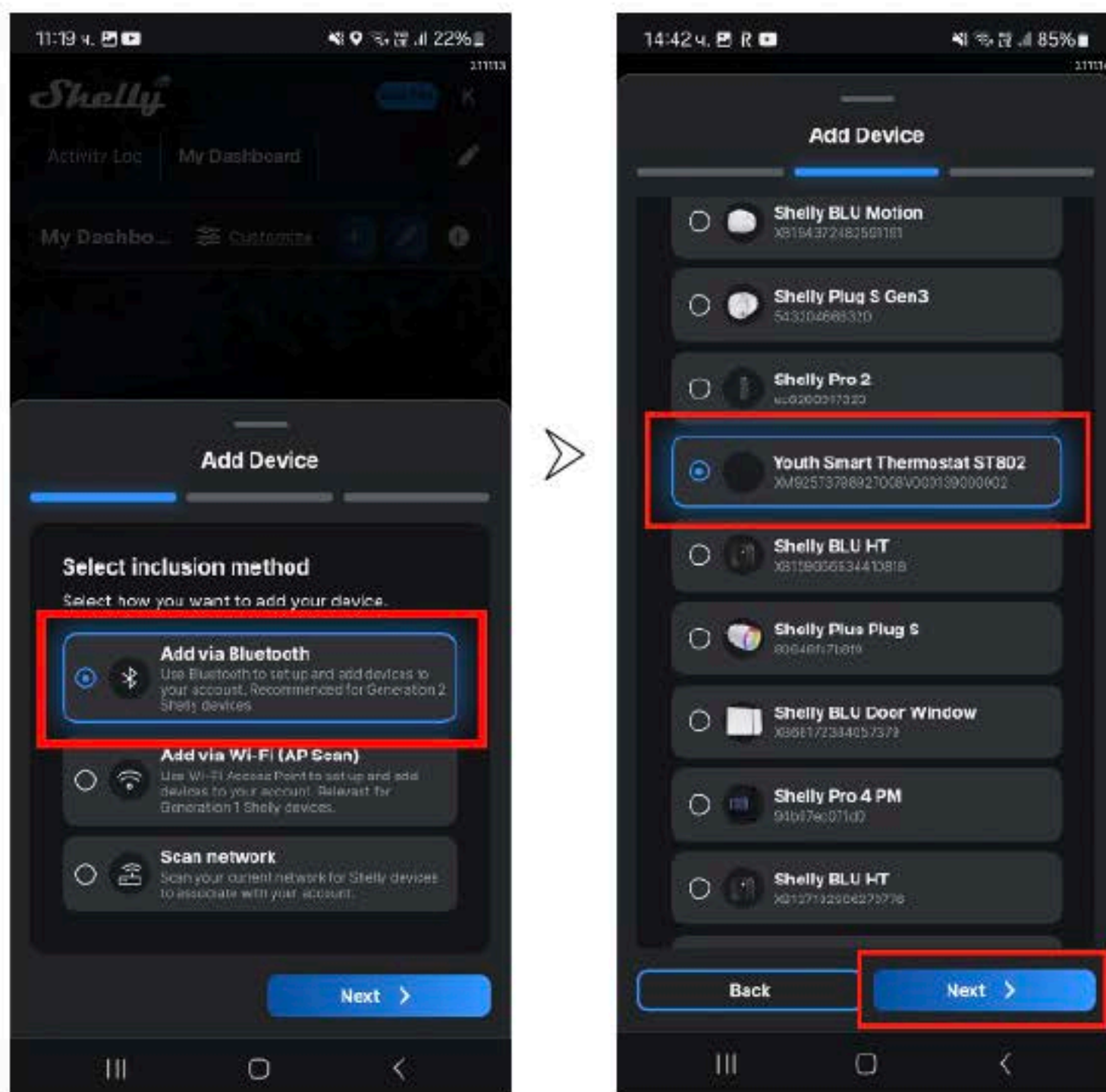
WiFi Connection



- If the APP can not detect the device, please hold “ ON/OFF ” button for 10s. Then use APP “ Auto Scan ” again.
- Turn on the Bluetooth of the smart phone before configuring the network.
- Please use 2.4GHz WIFI signal.

Add Device to Shelly Smart Control app

In the app, click on the  button in the lower right corner, and follow the steps to add your new thermostat to your Shelly account.



Once discovered, configure the WiFi network the thermostat should connect to. Please make sure to use a 2.4 GHz WiFi network.

Better home, better life